



Buncombe
Partnership
for Children



2016/2017

**Impact
Report**

20 Years of Accomplishments

Over the past 20 years, Buncombe Partnership for Children has been a strong supporter of children's learning and early development.

Our passion and work have helped the community prepare our children for lifelong success. **Here are just a few examples:**

- ▶ We piloted and administered the NC Pre-K Program (formerly More At Four, founded in 2002), increasing slots for children from 25 to 427.
- ▶ We led the local First 2,000 Days campaign, and as a result, our community understands that the time between birth and kindergarten is critical for setting the foundation for children's lifelong success.
- ▶ We strengthened professional development opportunities for early educators by introducing a classroom coaching model and offering a wide range of training series and online courses.
- ▶ We worked with the Adverse Childhood Experiences (ACEs) Learning Collaborative to bring resiliency training to early educators.
- ▶ We partnered with the Literacy Council of Buncombe County to bring more books into the homes of children through Dolly Parton's Imagination Library.
- ▶ We expanded from 2 to 12 staff and continue to build new partnerships to fulfill our mission.



Our Next 20 Years

We are excited about what the future holds for the children of Buncombe County. The Partnership will:

- ▶ Help lead the Asheville-Buncombe Preschool Planning Collaborative to expand access to high quality, affordable preschool.
- ▶ Champion a culture of early literacy by giving a new book each month to every child in Buncombe County from birth to age five through Dolly Parton's Imagination Library.
- ▶ Explore a permanent location for Asheville Adventure Play, offering children and families a place to experience outdoor, hands-on, child-directed play using imagination and recycled materials.
- ▶ Advocate for improved reimbursement rates for programs offering subsidized care and for fair compensation for the early educator workforce.
- ▶ Collaborate with key partners to simplify and streamline the application process for families seeking any type of subsidized child care.





Our Staff & Mission

Executive Director:

Amy Barry

Finance & Contracts
Manager:

Carey Price

NC Pre-K Coordinator:

Stacey Bailey

Operations Manager:

Sonja Palmer

Childcare Resource
& Referral Director:

Jenny Vial

Assistant Director:

Caroline Rodier

Shape NC Specialists:

Natasha Bowden

Mary Jo Deck

Early Childhood

Program Consultants:

Stevie Alverson

Cathy Finn

Stacy Lutz-Ovies

Anya Robyak

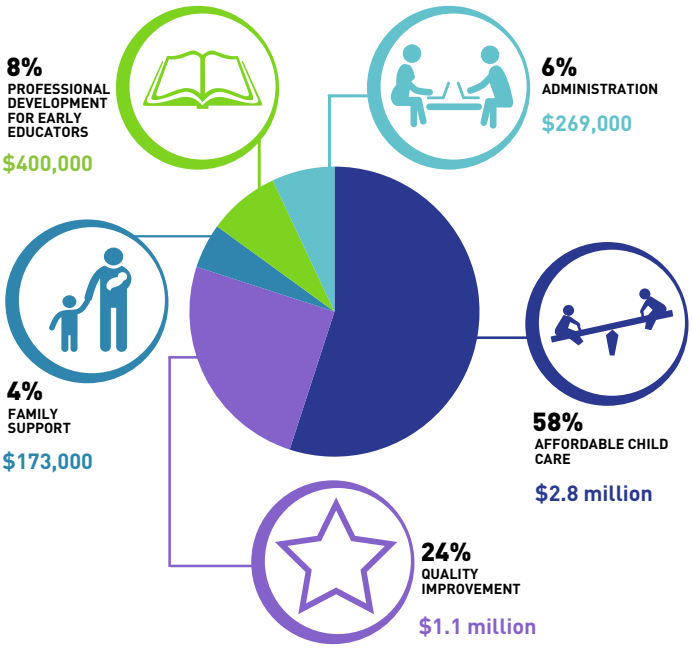
Our mission - to strengthen the capacity of educators, families, and the community to build a strong foundation for children's learning and development beginning at birth.

“In Buncombe County, we've got about one in four kids living in poverty, and preschool is a very concrete way to break that cycle. It's been tested and studied, and it helps kids, especially those from at-risk backgrounds. It helps them enter the educational system with stronger skills and helps with academic achievement over the years.”

-Jasmine Beach-Ferrara

Buncombe County Commissioner

Our Investments



“ Investment in early childhood is an imperative for NC. Don't look at it as an expense. Look at it as an investment. ”

-Jack Cecil

President of Biltmore Farms
Chair of the Institute for Emerging Issues National Advisory Board



Our Results

We believe in improving access to quality child care, so we invested **\$2.8 million in affordable child care.**

652 children received access to high quality child care through subsidies (vouchers) and **457** children enrolled in the NC Pre-Kindergarten Program.

We believe access to high quality child care can change a child's life, so we invested **over \$1 million in advancing child health and improving child care quality.**

383 early educators in **55** programs received Child Care Health Consultation services to improve health and safety practices, including support of children with special health care needs.

125 staff from **26** child care programs received classroom coaching through the SUNSHINE Project, which reduces preschool expulsion.

66 child care programs received grants through the Sustaining Facility Quality Initiative, which helps providers uphold high quality care; **98%** of programs successfully maintained their star rating.

49 child care facilities in WNC, **17** in Buncombe County, improved physical activity and nutrition practices through Shape NC.

Our Partners

NC Pre-K Providers:

Asheville City Schools

CAO/Head Start

Eliada Child Development

Verner Center for Early Learning

Program Providers:

Asheville City Schools

Buncombe County Health and Human Services

Child Care Services Association

FIRST

Literacy Council of Buncombe Co.

MAHEC

Suzanne Metcalf Communications

Mountain Bizworks

Self-Help Credit Union

Southwestern Child

Development Commission

We believe in providing tools for parents and encouraging early literacy, so we invested **over \$170,000 in supporting families.**



100% of families who participated in The Incredible Years Parenting Education Program reported more confidence in their parenting abilities and stronger relationships with their children.

16 Asheville Adventure Play Pop-ups – free, hands-on, child-directed play events — were held with over **1,600** children and adults participating.

400 children received a free book every month through Dolly Parton’s Imagination Library, supporting the creation of home libraries.

290 children attended Play & Learn Groups. **70%** of parent participants reported their children were better able to participate in group activities and get along with others.

We believe young children deserve highly educated and well paid teachers, so we invested **\$400,000 in professional development.**

618 educators attended **71** workshops through Child Care Resource & Referral; **100%** reported learning new skills.

140 early educators earning less than **\$17** per hour and teaching **2,839** children received salary supplements through The WAGE\$ Project.

“ It really helps make ends meet. Without WAGE\$, it would be very difficult to be able to work in child care. WAGE\$ makes my life WAY easier. ”

-Early Educator

Our Donors

Thank you to our donors, without whom this work would not be possible.

Corporate Sponsors

Eblen Short Stop Stores
The Hop
Johnson Price & Sprinkle PA
Kaplan Early Learning Co.
The Matt & Molly Team/Keller
Williams
Mission Health

Major Funders & Bequests

Community Foundation of WNC
Fanny Landwirth Foundation
Estate of Frank Cummings

Major Supporters

Elizabeth De Caetani
Terry Van Duyn
Gary & Theresa Landwirth

Supporters

Anonymous (1)
Bess & Rod Baird
Fred & Cleone Black

Donors

Amy Barry
Erwin Gunnels
Doug Keefer with Sage Builders
Shona MacIntyre
Brian Repass
Larry Thompson III

Friends

Anonymous (3)
Julie Armbruster
Stacey Bailey
Heather Butler
Elizabeth & Andy Cunagin
Louise Glickman
Jessica Griffin
Wendy Haner
Terry Krebbs
Donna James
Virginia Mckinley
Dr. Susan Mims
Erin Pennington
Irene Semanchuk

Additional gifts in honor of:

Greg Coffey
Diane Livingston
Lynne Pennington

To learn more about how you, your family, or your company can support Buncombe Partnership for Children, contact Carol Ann Willhite, Fund Development Coordinator, at carolann@buncombepfc.org and (828) 484-2363

Thank you to our board members for their generosity and 100% participation in the board giving campaign!

Officers

Nelle Gregory, *Chair*
Laurie Stradley, *Vice-Chair*

W. Gene Loflin, *Treasurer*
Scott Workman, *Secretary*

Members

Natasha Adwaters	Deborah Gebbie	Melinda Raab
Mary Arnold	Rev. Spencer Ellis Hardaway	Missy Sherburne
Brandon Becker	Holly Jones	Trish Wallin
Deborah Calhoun	Allison Jordan	Dr. Michael Weizman
Richard Caro	Emi Kubota	Gwen Wisler
Stephen Cash	Dawn Meskil	
Jennie Eblen	Maggie Panther	